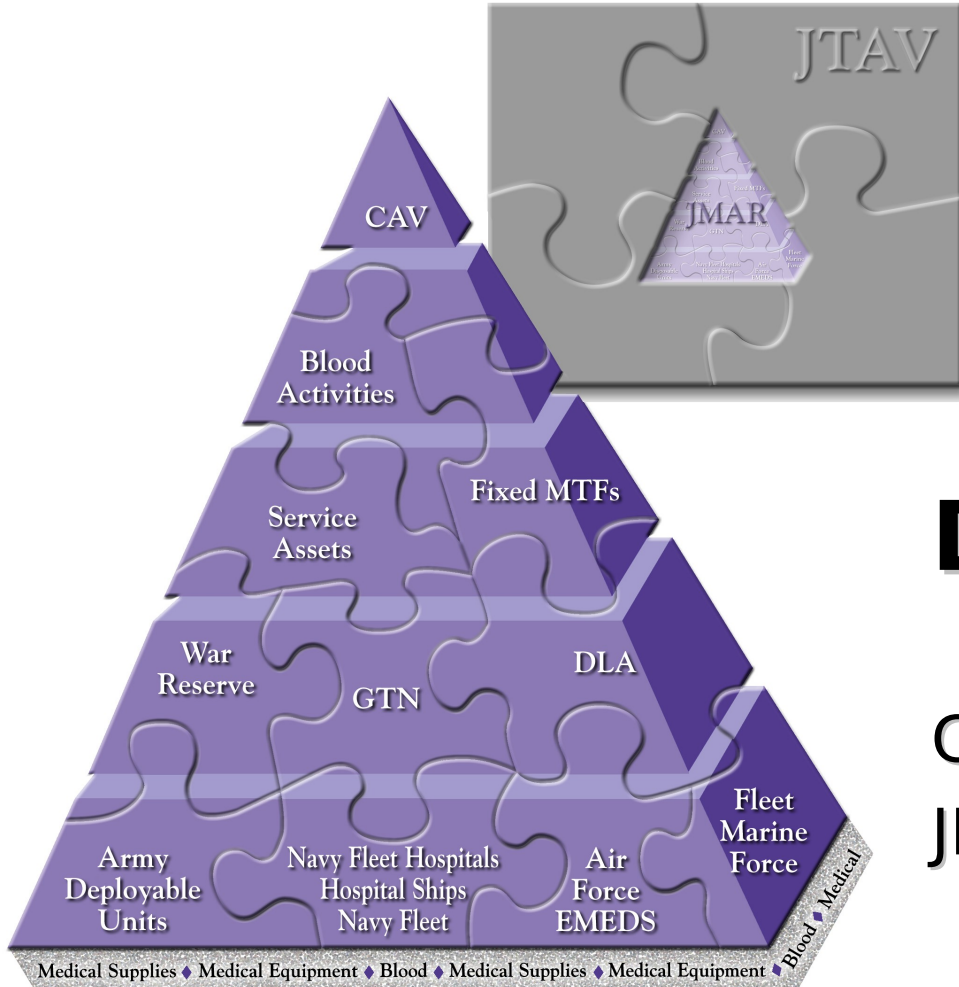




# The Joint Medical Asse Repository (JMAR)



## DSCP Off-Site

Captain Andrew Lattimore  
JMAR Project Manager



# Overview

- JMAR Today
- JMAR Current Architecture
- Future Plans
- Special Projects
- SBIR Project Highlights
- Questions

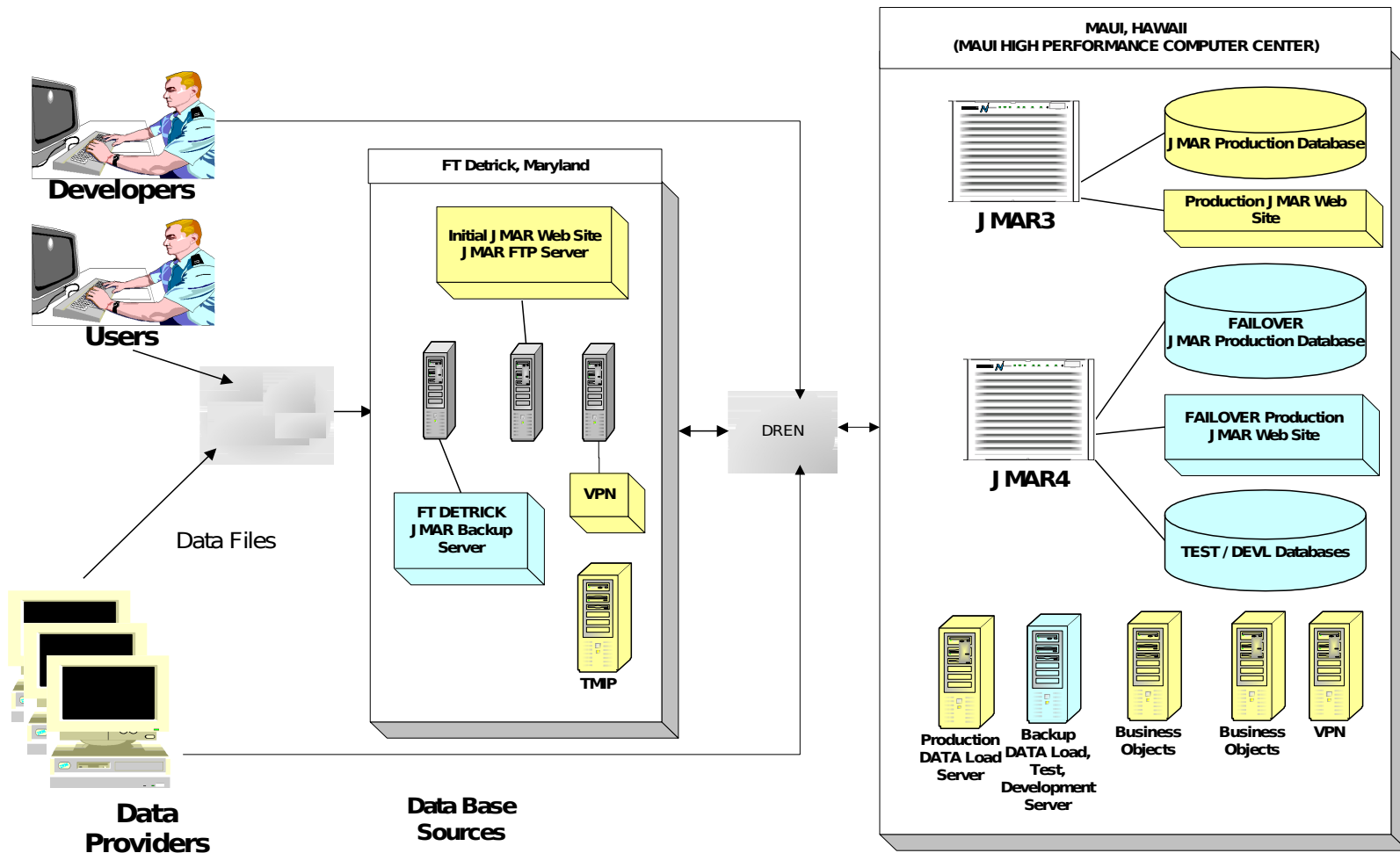


# JMAR Today

- Today JMAR maintains several million records of joint medical logistics and blood program data
- 2086 units are reporting medical logistics data to JMAR
  - 1434 Army units
  - 113 Marine Corps
  - 387 Navy units
  - 131 Air Force units
- 198 blood facilities are reporting data to JMAR
- Over the next year additional units will report data to JMAR as they migrate to DMLSS Release 3



# Current JMAR Architecture





# Future Plans

- The JMAR architecture will remain relatively unchanged for the next 12 months
  - However, the following enhancements will be made
    - New functionality to include business intelligence
    - Larger selection of canned reports
    - New presentation layer incorporating Flash technology and enhanced navigation
    - Role-based security and data segregation



# Future Plans

- Within the next 3 years, JMAR will complete migration from an Operational Data Store to a Data Warehouse
  - Preliminary design plans have been developed
    - Detailed discussion and final architectural plans will be developed over the next four months
    - Historical data will provide a mechanism to support predictive logistics
  - Implementation of Dashboard metrics that provide graphical depictions of key logistics business areas
  - Integration of a GIS map into the JMAR application



# Special Projects

- JMAR is involved in the following special projects
  - Single sign-on providing “pass through” authentication between JMAR and DSCP customers
  - Interoperability testing for possible receipt of theater AM-SA and DBSS data through TMIP
  - SBIR for development of a dashboard metric reporting tool and GIS map



# Small Business Innovative Research (SBIR) Project Highlights





# Vision - Operational Dashboard












Main Menu Screen - Microsoft Internet Explorer provided by Hartford Hospital

File Edit View Favorites Tools Help

Back Forward Stop Refresh Home Search Favorites Media Links

## Joint Medical Asset Repository (JMAR) Operational Dashboard

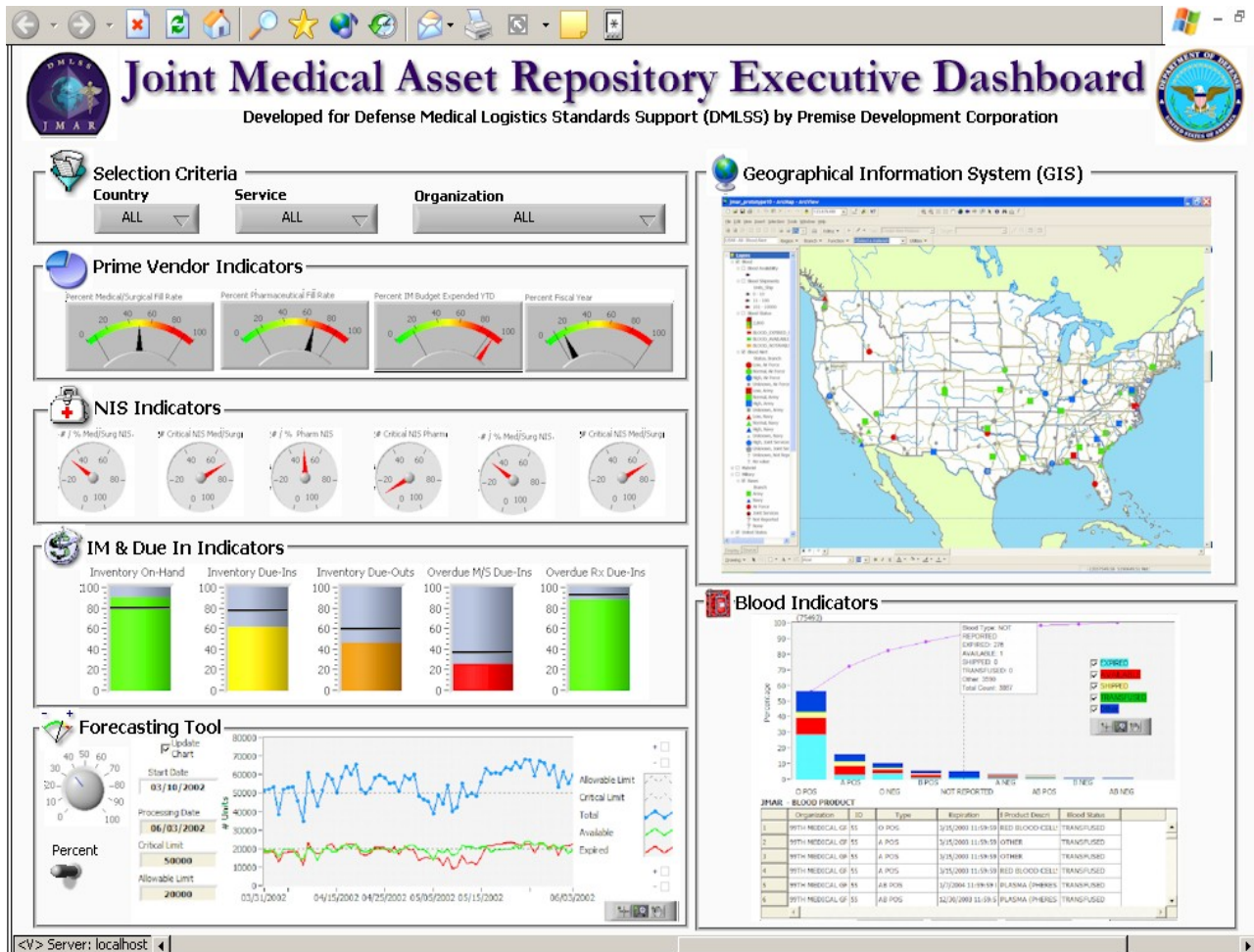
 <b>Blood Assets</b>	 <b>Equipment Management</b>	 <b>Facility Management</b>
 <b>Geographical Information System</b>	 <b>Prime Vendor</b>	 <b>Regional Dashboard</b>
 <b>Log-In</b>	 <b>Online Help</b>	 <b>EXIT</b>

Developed for Defense Medical Logistics Standards Support (DMLSS) by Premise Development Corporation

<V> Server: localhost



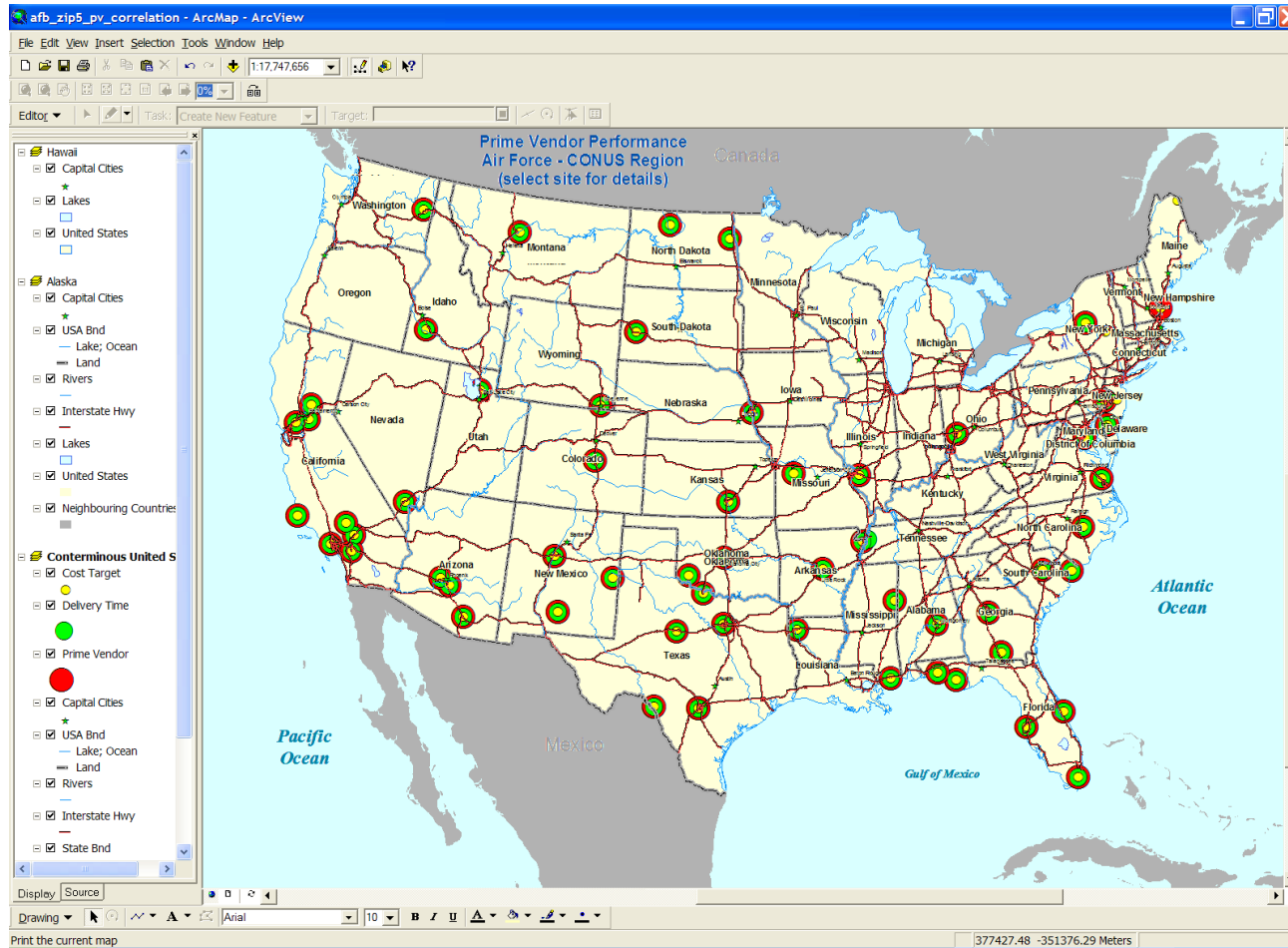
# Vision - Web-based, GIS-Enabled Executive Dashboard





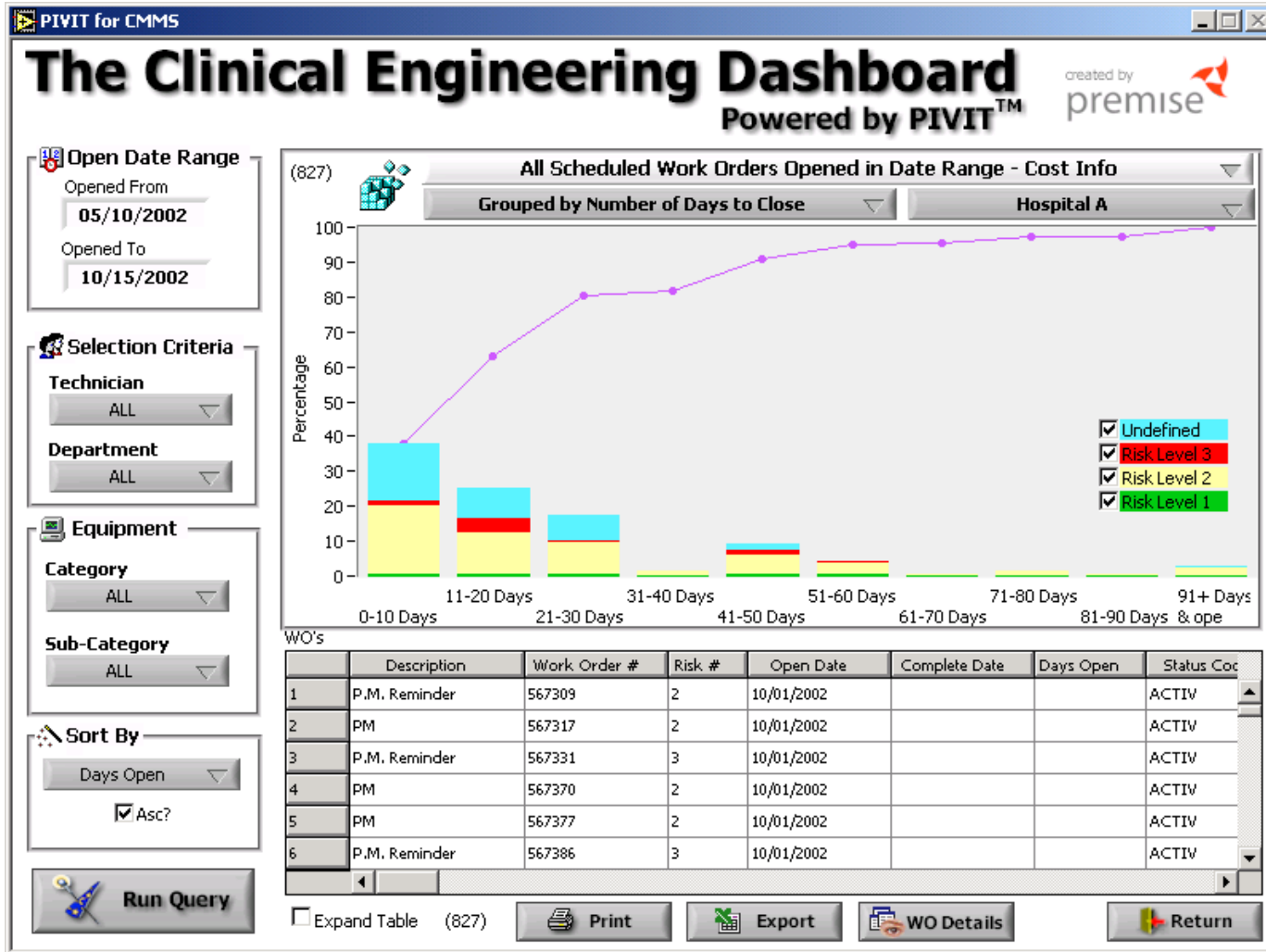


# Vision - Materiel/Prime Vendor Map Concept



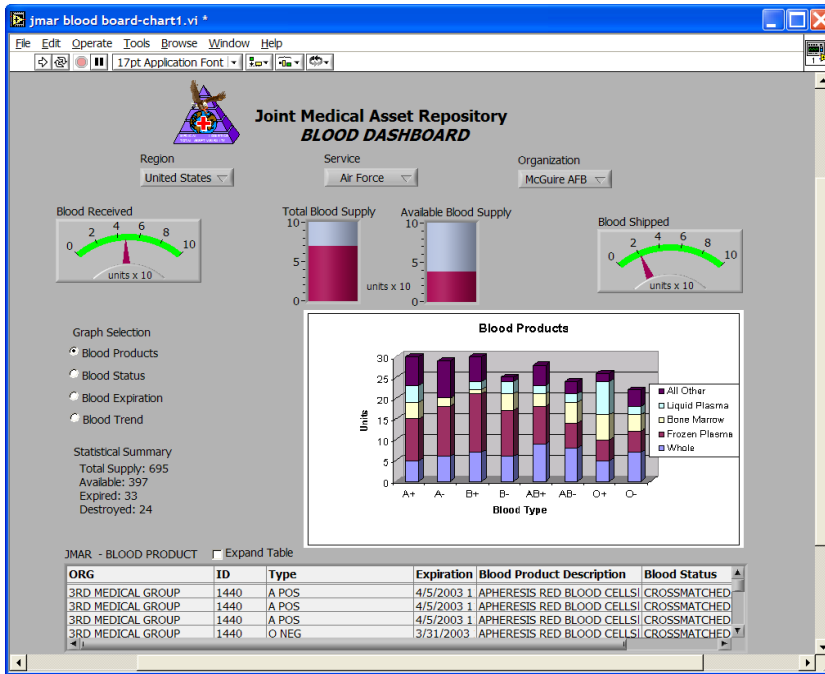


# Vision - Equipment/Facility Maintenance Dashboard



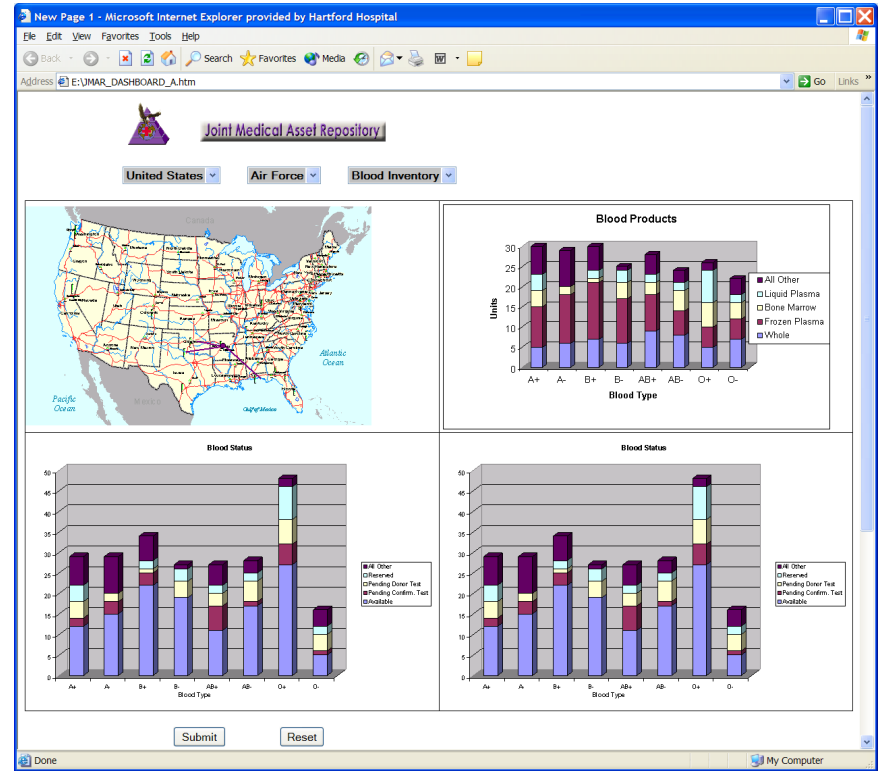
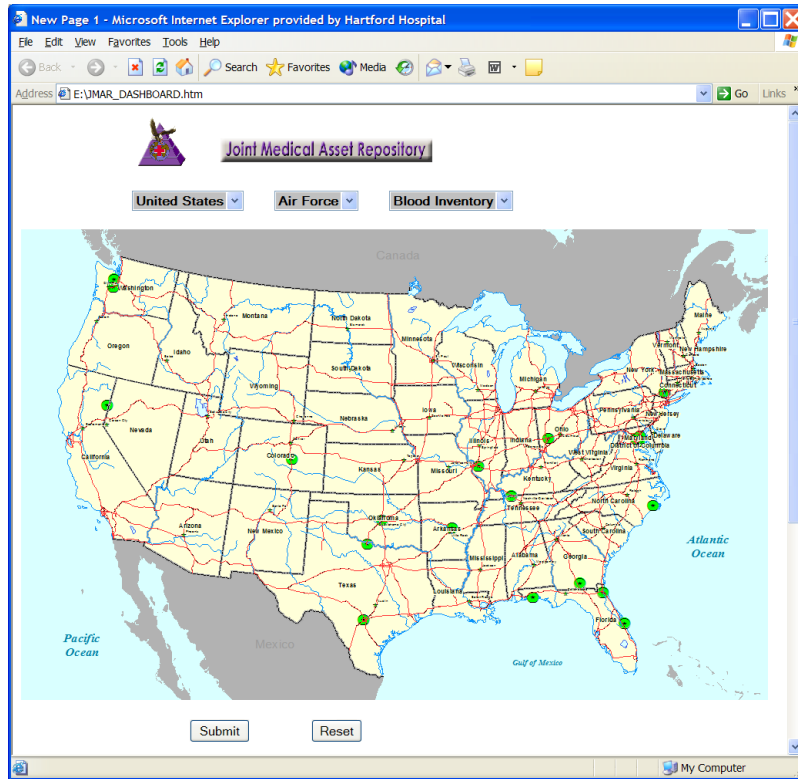


# Vision - Blood Dashboard Concept



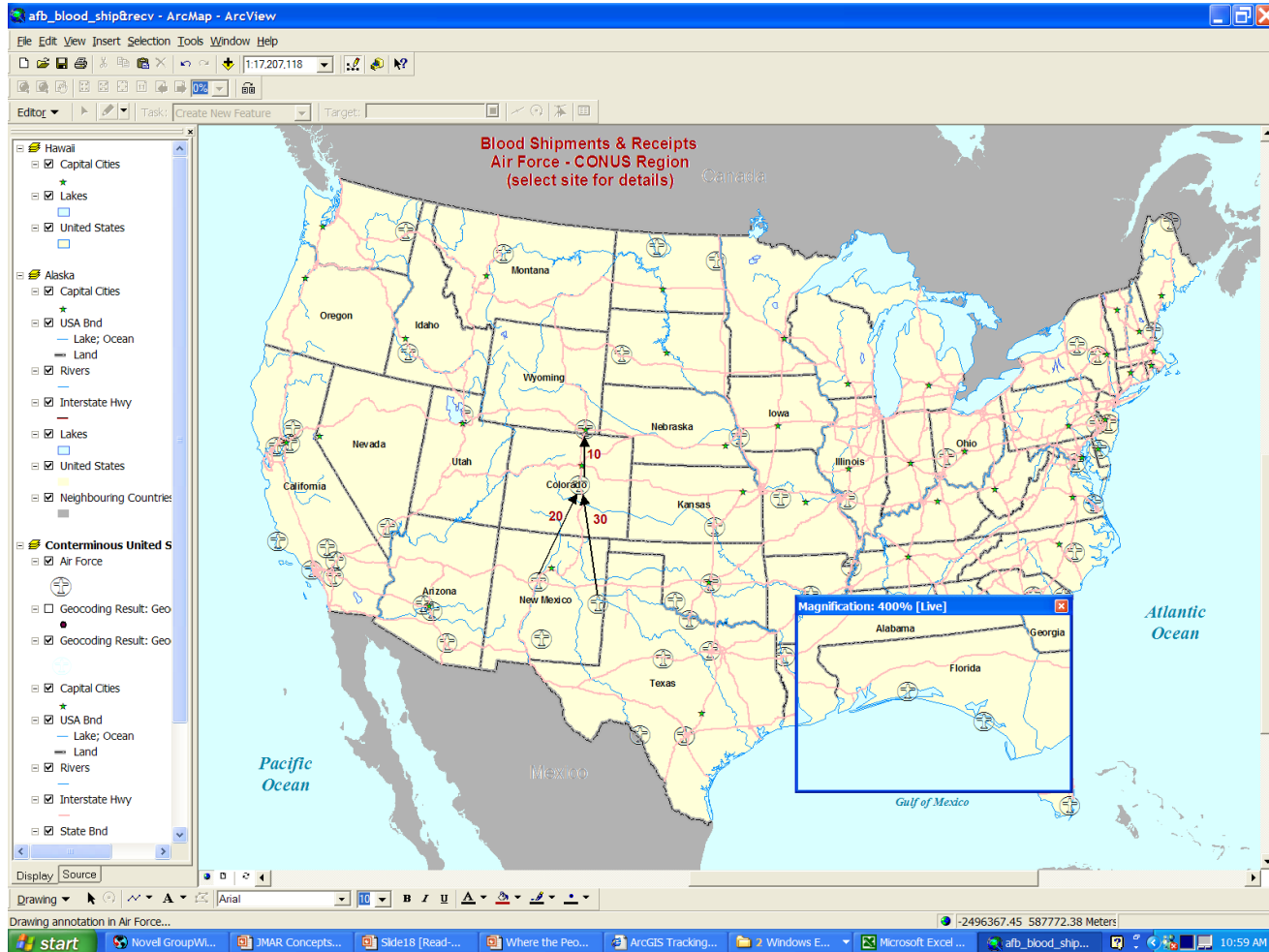


# Vision - Blood Map Concept



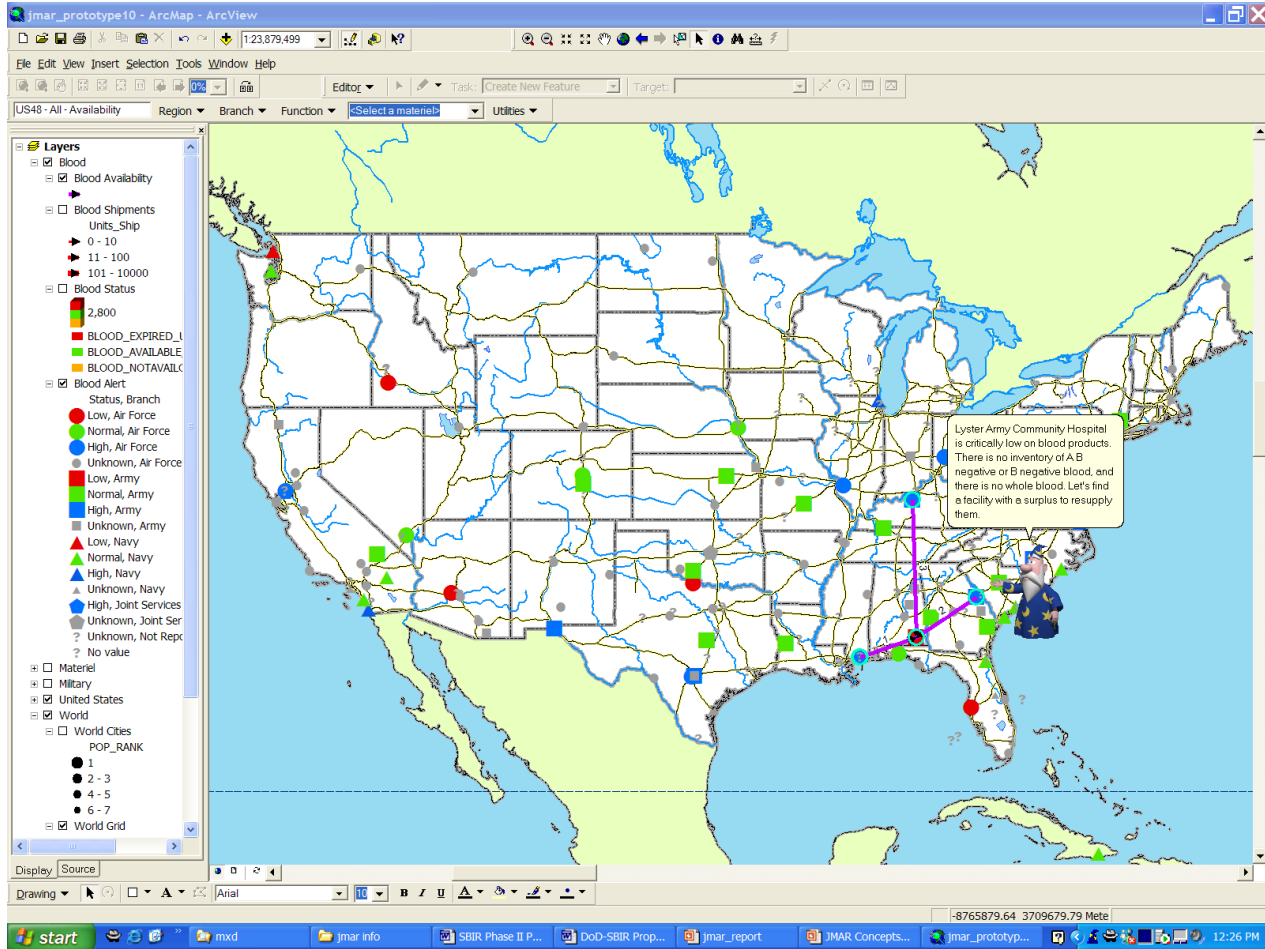


# Vision - Blood Shipments Concept



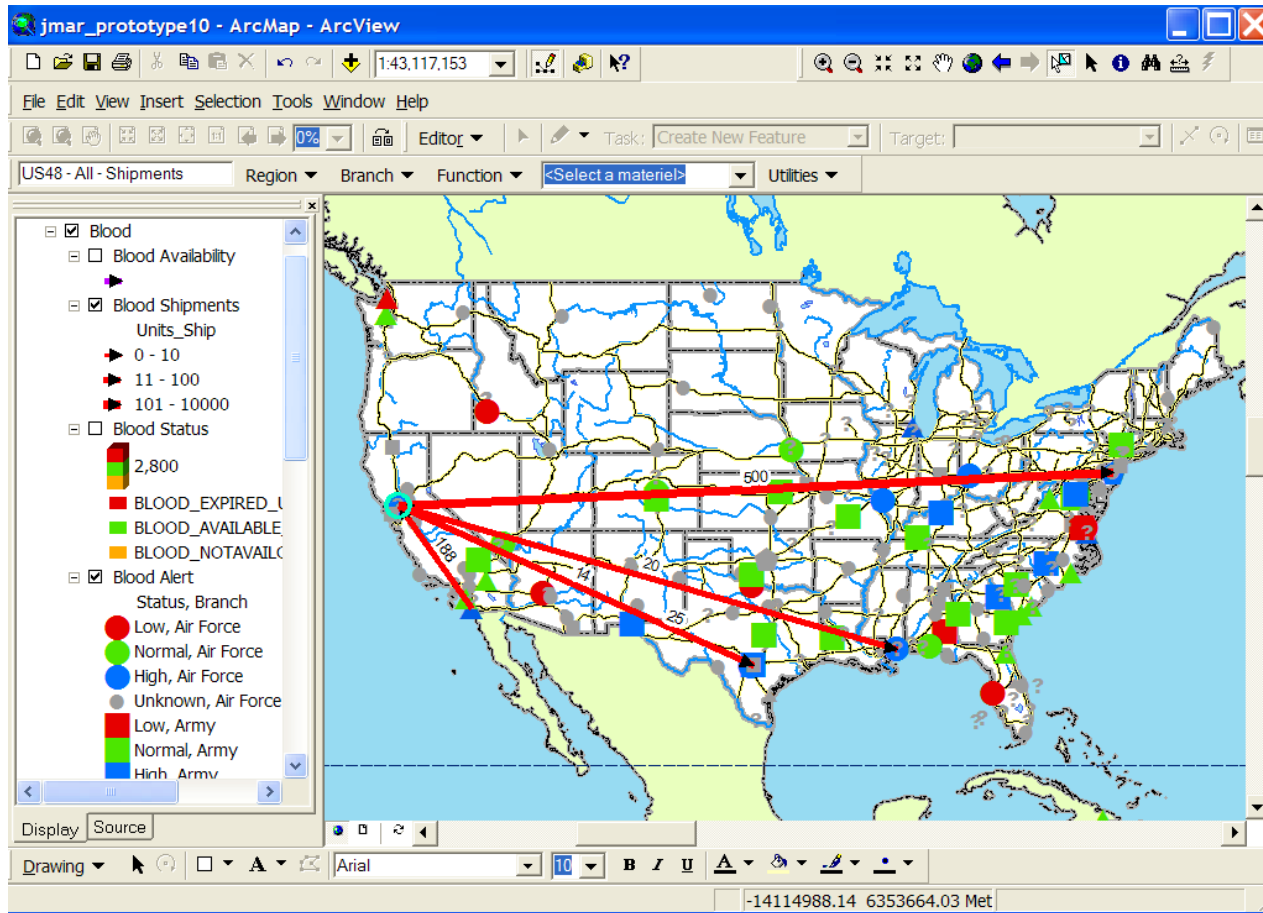


# Vision - Blood Alert Map with Re-Supply Analysis





# Vision - Blood Alert Map with Re-Supply Analysis





# Questions

